

# STARGRES®



STAR  
2.0

STAR  
3.0

STARGRES®



APPLICATIONS	5
PROPERTIES	5
<b>3.0</b>	
BASALTINA	9
SPECTRE	11
TOWN	13
STARK	15

<b>2.0</b>	
DANZIG	19
DOWNTOWN	23
BRESLAU	27
STARK	29
SPECTRE	31
GRANITO	33

PIETRA SERENA	35
CRACOVIA	37
BASALTINA	39
TOWN	42
GREY WIND	45
KYARA	47
MIXED STONE	49

SUOMI	51
TECHNICAL PARAMETERS	52
PACKING	55
PRODUCT DESTINATION	56



Thanks to modern technology of producing **PORCELAIN STONEWARE** a product with superior strength is made, providing a safe surface pavement, perfect for use outside and inside.

This is a single, monolithic plate, **2 cm thick**, occurring in the basic toned range of colours, from grey to black and from grey-brown to beige. It is also a palette of silver – cream shades, ideal to obtain classic and elegant surfaces. **For use outside, in public and private places.** This is a perfect solution for a terrace, patio, alley in a garden or on pool edges. Inside - it can be used in places where it is recommended to use the raised floor. Wherever you want.

## APPLICATIONS



TERRACES / GARDENS  
DRIVEWAYS / GARAGES



BEACHES / BATHING  
BEACHES  
HOLIDAY CAMPS



HOTELS / RESTAURANTS



PUBLIC SPACE

## PROPERTIES



RESISTANCE TO  
TEMPERATURE  
AND WEATHER CHANGES



FROST RESISTANCE



LOAD RESISTANCE



SCRATCH RESISTANCE



RESISTANCE TO STAINING  
AND CHEMICALS



EASY TO ASSEMBLE  
AND DISASSEMBLE



EASY TO CLEAN BOTH DRY  
AND WET



SLIP RESISTANCE



# STAR 3.0

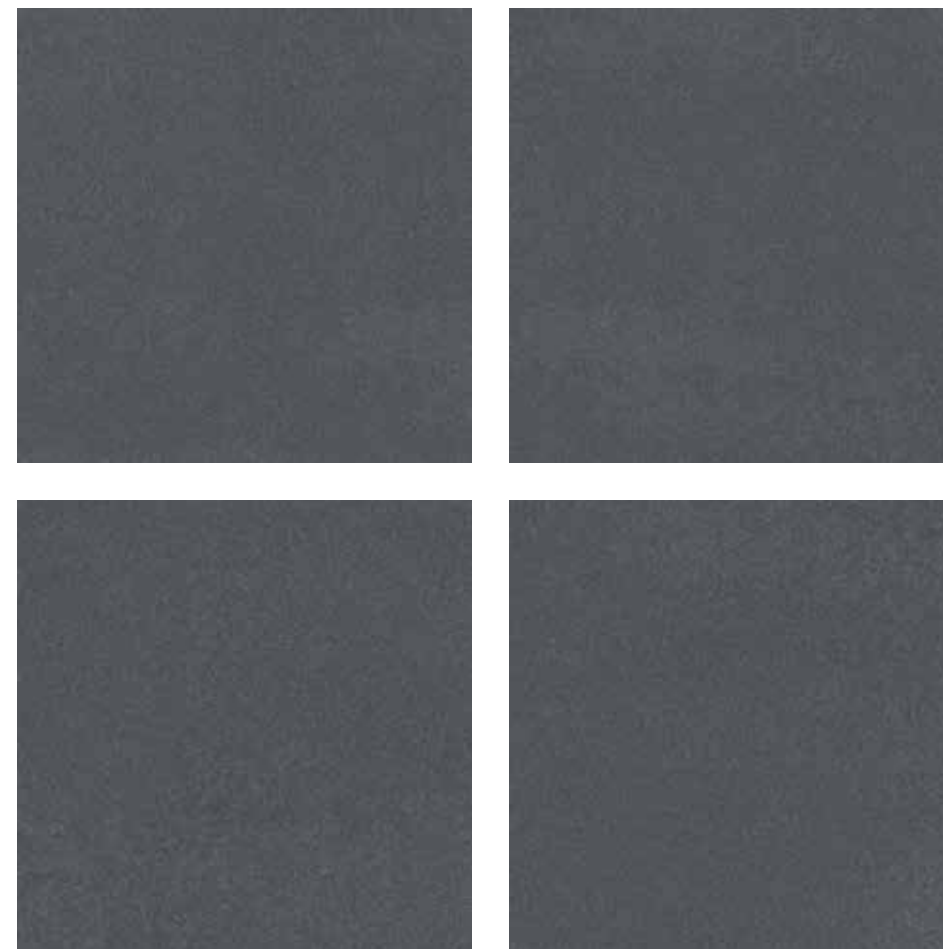
BASALTINA  
SPECTRE  
TOWN  
STARK

STAR  
3.0



RECTIFIED

BASALTINA 3.0  
RECTIFIED



BASALTINA 60x60x3



STAR  
3.0

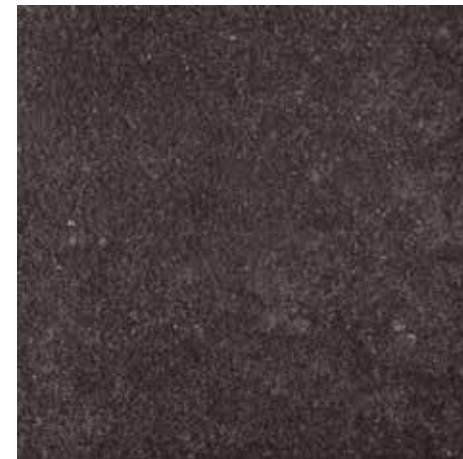


RECTIFIED

SPECTRE 3.0  
RECTIFIED



SPECTRE GREY 60x60x3



SPECTRE DARK GREY 60x60x3



STAR  
3.0



RECTIFIED

TOWN 3.0  
RECTIFIED



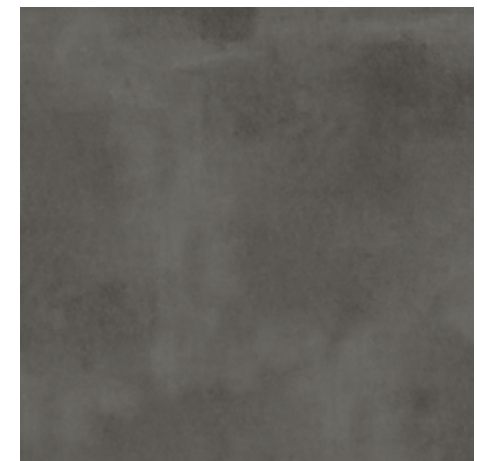
TOWN SOFT GREY 60x60x3



TOWN GREY 60x60x3



TOWN BEIGE 60x60x3



TOWN ANTRACITE 60x60x3

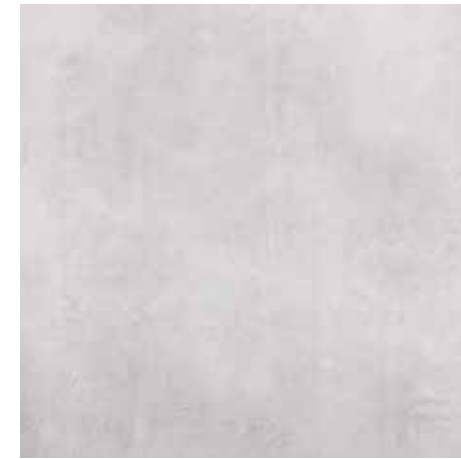




STAR  
3.0



STARK 3.0  
RECTIFIED



STARK WHITE 60x60x3



STARK PURE GREY 60x60x3



STARK GRAPHITE 60x60x3

RECTIFIED





# STAR 2.0

- DANZIG
- DOWNTOWN
- BRESLAU
- STARK
- SPECTRE
- GRANITO
- PIETRA SERENA
- CRACOVIA
- BASALTINA
- TOWN
- GREY WIND
- KYARA
- MIXED STONE
- SUOMI

「 DANZIG 2.0 」  
RECTIFIED



STAR  
2.0

DANZIG 2.0  
RECTIFIED



DANZIG WHITE 75x75x2



DANZIG TAUPE 75x75x2



DANZIG GREY 75x75x2



DANZIG 2.0  
RECTIFIED



DANZIG WHITE 60x60x2



DANZIG TAUPE 60x60x2



DANZIG GREY 60x60x2



DANZIG NATURAL 60x60x2



DANZIG ANTRACITE 60x60x2



STAR  
2.0



RECTIFIED

「 DOWNTOWN 2.0 」  
RECTIFIED



DOWNTOWN GREY 60x60x2



DOWNTOWN TAUPE 60x60x2



DOWNTOWN ANTRACITE 60x60x2



STAR  
2.0

Cafe  
Racer



RECTIFIED

DOWNTOWN 2.0  
RECTIFIED



DOWNTOWN GREY 75x75x2



DOWNTOWN TAUPE 75x75x2



DOWNTOWN ANTRACITE 75x75x2



STAR  
2.0



RECTIFIED

BRESLAU 2.0  
RECITIFIED



BRESLAU LIGHT 60x60x2



BRESLAU DARK 60x60x2

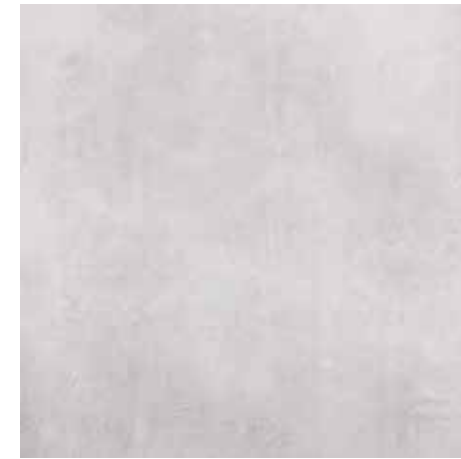


STAR  
2.0



RECTIFIED

「 STARK 2.0 」  
RECTIFIED



STARK WHITE 60x60x2



STARK PURE GREY 60x60x2



STARK GRAPHITE 60x60x2





STAR  
2.0



RECTIFIED

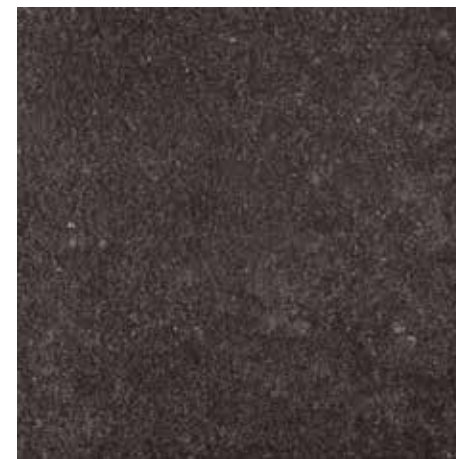
SPECTRE 2.0  
RECTIFIED



SPECTRE GREY 60x60x2



SPECTRE GREY 40x81x2



SPECTRE DARK GREY 60x60x2



SPECTRE DARK GREY 40x81x2



STAR  
2.0



RECTIFIED

GRANITO 2.0  
RECTIFIED



GRANITO GRIGIO 60x60x2



GRANITO GRIGIO 40x81x2



GRANITO BEIGE 60x60x2



GRANITO BEIGE 40x81x2



GRANITO ANTRACITE 60x60x2



GRANITO ANTRACITE 40x81x2



STAR  
2.0



RECTIFIED

PIETRA SERENA 2.0  
RECTIFIED



PIETRA SERENA CREAM 60x60x2



PIETRA SERENA GREY 60x60x2



PIETRA SERENA ANTRACITE 60x60x2



PIETRA SERENA BLACK 60x60x2



STAR  
2.0



RECTIFIED

CRACOVIA 2.0  
RECTIFIED



CRACOVIA WHITE 60x60x2



CRACOVIA WHITE 40x81x2



CRACOVIA GREY 60x60x2



CRACOVIA GREY 40x81x2



STAR  
2.0



RECTIFIED

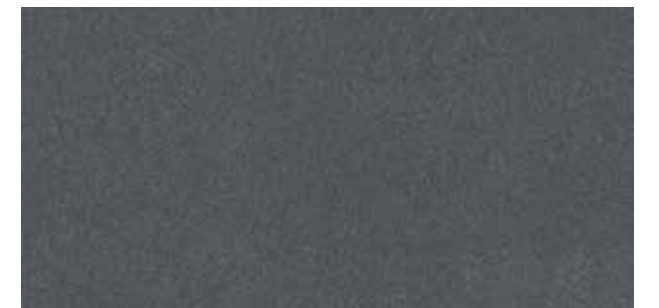
BASALTINA 2.0  
RECTIFIED



BASALTINA 75x75x2



BASALTINA 60x60x2



BASALTINA 40x81x2



TOWN 2.0  
RECTIFIED



STAR  
2.0



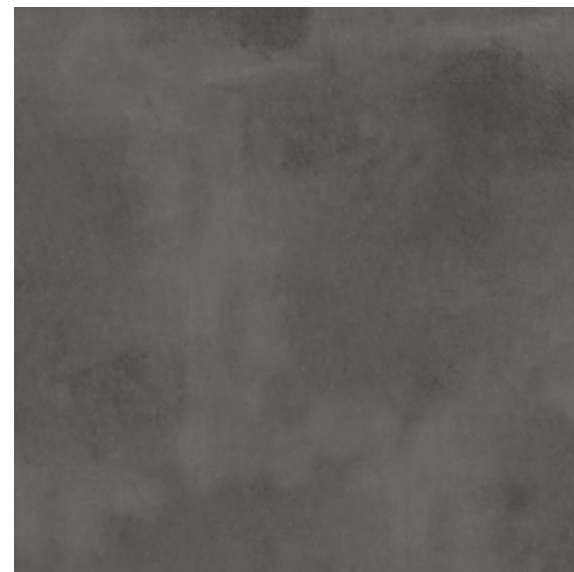
TOWN SOFT GREY 75x75x2



TOWN GREY 75x75x2



TOWN BEIGE 75x75x2



TOWN ANTRACITE 75x75x2



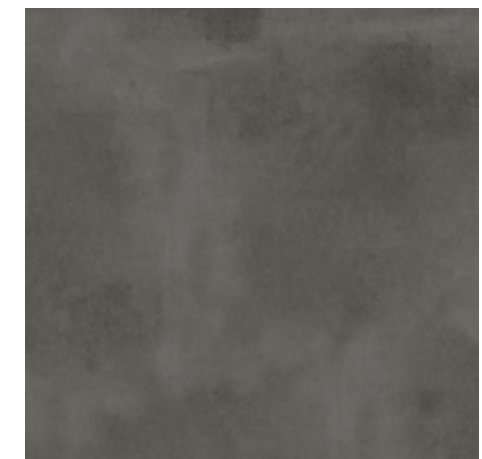
TOWN SOFT GREY 60x60x2



TOWN GREY 60x60x2



TOWN BEIGE 60x60x2



TOWN ANTRACITE 60x60x2



STAR  
2.0



RECTIFIED

GREY WIND 2.0  
RECTIFIED



GREY WIND LIGHT 60x60x2



GREY WIND MILD 60x60x2



GREY WIND DARK 60x60x2



GREY WIND ANTRACITE 60x60x2





STAR  
2.0



RECTIFIED

KYARA 2.0  
RECTIFIED



KYARA LIGHT 60x60x2



KYARA DARK 60x60x2



**STAR**  
**2.0**



RECTIFIED

MIXED STONE 2.0  
RECTIFIED



MIXED STONE SOFT GREY 60x60x2



MIXED STONE GREY 60x60x2



STAR  
2.0



RECTIFIED

SUOMI 2.0  
RECTIFIED



SUOMI WHITE 60x60x2



SUOMI WHITE 40x81x2



SUOMI CREAM 60x60x2



SUOMI CREAM 40x81x2



SUOMI BROWN 60x60x2



SUOMI BROWN 40x81x2



# INSTALLATION



**INSTALLATION OF TILES ON GRAVEL BASES OR SAND BASES**

**INSTALLATION ON NATURAL SOIL**

- Porcelain tile STAR 2.0, 3.0
- Layer of fine gravel
- Stabilizing layer
- Drainage layer
- Soil

**INSTALLATION ON FLOOR SLABS**

- Porcelain tile STAR 2.0, 3.0
- Ballast (gravel)
- Insulating layer
- Separating layer
- Thermo insulating layer
- Impermeable coating/damp proof membrane layer
- Sloped sub-base
- Floor slab



**INSTALLATION ON GRASS BASE**

**GRASS (SOIL)**

- Porcelain tile STAR 2.0, 3.0
- 2 Porcelain tile STAR 2.0, 3.0
- Layer of soil with grass base
- Layer of fine gravel
- Stabilizing layer
- Drainage layer
- Soil

# INSTALLATION



**INSTALLATION OF RAISED FLOORS ON FLAT BASES**

**RAISED FLOOR INSTALLATION ON FLAT BASE**

- Porcelain tile STAR 2.0
- Distance support pedestal (fixed, regulated or self-leveling)
- Separating layer
- Thermo insulating layer
- Impermeable coating/damp proof membrane layer
- Sloped sub-base
- Subfloor

**WARNING**

When installing 2 cm ceramic planks as a raised bracket terrace system, the plank may break. Therefore, the manufacturer recommends checking the specific usage before installation. Under certain conditions, 2 cm plank should be reinforced by a layer of fiber mesh or galvanized sheet. Failure to follow the instructions may lead to misuse of the product or cause serious damage or injury.



**INSTALLATION OF TILES WITH THE USE OF GLUE**

**BASE (SOIL)**

- Porcelain tile STAR 2.0, 3.0
- Base
- Leveling layer
- Layer of gravel stabilized with lean concrete
- Soil

**BASE (FLOOR SLAB)  
INSTALLATION OF FLAT BASES**

- Porcelain tile STAR 2.0, 3.0
- Cement base layer
- Separating layer
- Thermal-insulating element
- Impermeable coating/damp proof membrane layer
- Sloped sub-base
- Floor slab

# CERTIFICATES

**Institut Ceramiki i Materiałów Budowlanych**  
Instytut Ceramiki i Materiałów Budowlanych  
 02-676 Warszawa, ul. Postępu 9  
 LABORATORIUM BADAWCZE CERAMIKI I MATERIAŁÓW BUDOWLANYCH  
 AKREDYTOWANE PRZEZ POLSKIE CENTRUM AKREDYTACJI  
 NR CERTYFIKATU AB 115

ilość stron 11  
 Numer egz. 1

**SPRAWOZDANIE Z BADAŃ NR 32/LB/2016**

**NAZWA WYROBU:** PLYTKI CERAMICZNE  
**ZLECENIODAWCA:** STARGRES SP. Z O.O.  
 UL. CERAMICZNA 5  
 26-200 KOŃSKIE  
**DATA OTRZYMANIA PRÓBEK:** 13.10.2015r.  
**DATA WYKONANIA BADANIA:** 10.12.2015r.–18.02.2016r.  
**WYKONAWCA:** mgr Agnieszka Ducka  
 technik Jacek Kamiński  
 mgr Robert Sytek

Warszawa, dnia 23.02.2016r.

**Institut Ceramiki i Materiałów Budowlanych**  
Instytut Ceramiki i Materiałów Budowlanych  
 02-676 Warszawa, ul. Postępu 9  
 LABORATORIUM BADAWCZE CERAMIKI I MATERIAŁÓW BUDOWLANYCH  
 AKREDYTOWANE PRZEZ POLSKIE CENTRUM AKREDYTACJI  
 NR CERTYFIKATU AB 115

ilość stron 10  
 Numer egz. 1

**SPRAWOZDANIE Z BADAŃ NR 45/LB/2015**

**NAZWA WYROBU:** Płytki ceramiczne prasowane na sucho o małej nasiąkliwości wodnej E<sub>s</sub> ≤ 0,5% Grupa IIIa.  
**ZLECENIODAWCA:** STARGRES Sp. z o.o.  
 UL. CERAMICZNA 5  
 26-200 KOŃSKIE  
**DATA OTRZYMANIA PRÓBEK:** 14.01.2015r.  
**DATA WYKONANIA BADANIA:** 19.01.2015 – 20.03.2015r.  
**WYKONAWCA:** mgr Agnieszka Dryńska  
 mgr Agnieszka Ducka  
 technik Jacek Kamiński  
 mgr inż. Joanna Lewicka

Warszawa, dnia 26.03.2015r.

# TECHNICAL PARAMETERS

PROPERTIES	TEST ACCORDING TO	PARAMETERS	
WATER ABSORPTION (%)	ISO 10545-3	EB ≤ 0,5	
MODULUS OF RUPTURE (N/MM2)	ISO 10545-4	MIN. 35	
BREAKING STRENGTH (N)	ISO 10545-4	MIN. 7000	
ABRASION CLASS PEI	ISO 10545-7	4	
CRAZING RESISTANCE	ISO 10545-11V	RESISTANT	
FROST RESISTANCE	ISO 10545-12	RESISTANT	
RESISTANCE TO CHEMICALS	ISO 10545-13	AMMONIUM CHLORIDE	GA
		SODIUM HYPOCHLORITE	GA
		HYDROCHLORIC ACID L	GLA
		CITRIC ACID	GLA
		POTASSIUM HYDROXIDE L	GLA
RESISTANCE TO STAINING	ISO 10545-14	CLASS 5	
SLIP R RATING	DIN 51130	R9=R12	

# PACKING

SIZE	PCS/BOX	M <sup>2</sup> /BOX	KG/BOX	BOX/PALLET	KG/PALLET	M <sup>2</sup> /PALLET
40x81x2	2	0,65	32	24	793	15,60
60x60x2	2	0,72	29	30	880	21,60
75x75x2	2	1,13	32	26	1240	29,38
60x60x3	1	0,36	25	40	1050	14,4

# PRODUCT DESTINATION



ABRASION RESISTANCE PEI



BAREFOOT CERTIFICATE



SLIP RESISTANCE / SLIPPERINESS



RECTIFIED



SIZE 2 CM / 3 CM



SHADE SPECTRUM

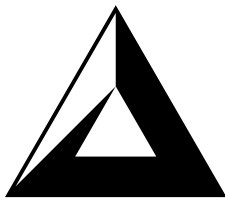


FOR LAYING ON THE FLOOR



FROST RESISTANCE

Without an explicit written consent of the Distributor no part of this catalogue may be copied in any form, which covers digital devices and information retrieval and storage systems. Modifications and changes to the products, technical specifications and the catalogue itself are forbidden. The colour of products may differ from the ones shown in the pictures due to limitations in the printing process.



STARGRES®

Stargres Sp. z o. o.  
26-200 Końskie  
ul. Ceramiczna 5  
Poland

[www.stargres.pl](http://www.stargres.pl)

